

**Composición del índice FTSE Latibex All Share al cierre: 22/04/2010 antes de ajuste**  
*Index constituents of FTSE Latibex All Share at the closing of: 22/04/2010 before adjustment*

<b>Cod. Sym.</b>	<b>Valor Company</b>	<b>Ajuste Free Float Free Float Adjust.</b>	<b># U. Contr. # Units</b>	<b>Cierre € Closing €</b>	<b>Capitalización € Capitalisation €</b>	<b>% Ponderación % Weighting</b>
XPBRA	PETROBRAS PR	100%	3.700.729.396	14,2900	52.883.423.068,8400	17,34
XVALP	VALE DO RIO	100%	2.108.579.618	22,1700	46.747.210.131,0600	15,33
XPBR	PETROBRAS OR	50%	2.536.673.672	16,0600	40.738.979.172,3200	13,36
XVALO	VALE RIO ORD	50%	1.628.362.241	23,6300	38.478.199.754,8300	12,61
XAMXL	AMERICAMOVIL	75%	841.886.018	38,0600	32.042.181.845,0800	10,50
XBBDC	B.BRADESCO	100%	1.713.542.828	13,3200	22.824.390.468,9600	7,48
XGGB	GERDAU PREF	75%	701.095.300	12,4300	8.714.614.579,0000	2,86
XUSI	USIMINAS	100%	253.388.612	24,5400	6.218.156.538,4800	2,04
XTII	TELMEX INTER	75%	356.987.370	14,6200	5.219.155.349,4000	1,71
XNOR	GF BANORTE	75%	151.376.066	33,3100	5.042.336.758,4600	1,65
XCMIG	CEMIG	100%	349.222.649	12,8100	4.473.542.133,6900	1,47
XTMXL	TELMEX	75%	363.082.150	12,2500	4.447.756.337,5000	1,46
XBRPP	BRADESPAR,PR	100%	227.024.896	17,6200	4.000.178.667,5200	1,31
XENI	ENERSIS, ORD	40%	261.209.332	15,1400	3.954.709.286,4800	1,30
XEOC	ENDESA CHILE	40%	109.356.728	34,8500	3.811.081.970,8000	1,25
XELTB	ELETROBRAS B	100%	227.186.643	13,1400	2.985.232.489,0200	0,98
XEKT	ELEKTRA	30%	73.314.413	40,0700	2.937.708.528,9100	0,96
XGMD	GRUPO MODELO	100%	63.717.182	43,7500	2.787.626.712,5000	0,91
XUSIO	USIMINAS ORD	40%	101.052.137	24,2600	2.451.524.843,6200	0,80
XELTO	ELETROBRAS	20%	181.004.705	10,7500	1.945.800.578,7500	0,64
XCOP	COPEL	100%	128.624.295	15,0400	1.934.509.396,8000	0,63
XBRK	BRASKEM	100%	329.871.890	5,3300	1.758.217.173,7000	0,58
XALFA	ALFA	50%	28.000.000	58,9000	1.649.200.000,0000	0,54
XNET	NET SERVIÇOS	75%	171.377.937	9,0000	1.542.401.433,0000	0,51
XBCH	BANCO CHILE	20%	27.517.233	46,5300	1.280.376.851,4900	0,42
XGEO	CORP. GEO	100%	537.835.959	2,3500	1.263.914.503,6500	0,41
XVOLB	VOLCAN	100%	127.581.524	9,6800	1.234.989.152,3200	0,40
XBRPO	BRADESPAR,OR	30%	36.799.352	17,5500	645.828.627,6000	0,21
XTZA	TV AZTECA	50%	107.439.899	4,3700	469.512.358,6300	0,15
XBFR	BBVA FRANCES	30%	160.908.392	1,8400	296.071.441,2800	0,10
XCEL	IUSACELL	30%	37.583.672	3,0000	112.751.016,0000	0,04
XSARE	SARE HOLDING	75%	28.717.889	2,7000	77.538.300,3000	0,03
XSBP	SANT.BANCORP	15%	6.995.866	9,2300	64.571.843,1800	0,02
<i>17.678.045.864</i>						<i>100,00</i>

---

**Cierre FTSE Latibex AS :** **3.774,6**      **Capitalización :** **305.033.691.313,1700 €**

---

## Composición del índice FTSE Latibex All Share al cierre: 22/04/2010 después de ajuste

*Index constituents of FTSE Latibex All Share at the closing of: 22/04/2010 after adjustment*

Cod. Sym.	Valor Company	Ajuste Free Float		Cierre € Closing €	Capitalización € Capitalisation €	% Ponderació % Weighting
		Free Float Adjust.	# U. Contr. # Units			
XPBRA	PETROBRAS PR	100%	3.700.729.396	14,2900	52.883.423.068,8400	17,34
XVALP	VALE DO RIO	100%	2.108.579.618	22,1700	46.747.210.131,0600	15,33
XPBR	PETROBRAS OR	50%	2.536.673.672	16,0600	40.738.979.172,3200	13,36
XVALO	VALE RIO ORD	50%	1.628.362.241	23,6300	38.478.199.754,8300	12,61
XAMXL	AMERICAMOVIL	75%	841.886.018	38,0600	32.042.181.845,0800	10,50
XBBDC	B.BRADESCO	100%	1.713.542.828	13,3200	22.824.390.468,9600	7,48
XGGB	GERDAU PREF	75%	701.095.300	12,4300	8.714.614.579,0000	2,86
XUSI	USIMINAS	100%	253.388.612	24,5400	6.218.156.538,4800	2,04
XTII	TELMEX INTER	75%	356.987.370	14,6200	5.219.155.349,4000	1,71
XNOR	GF BANORTE	75%	151.376.066	33,3100	5.042.336.758,4600	1,65
XCMIG	CEMIG	100%	349.222.649	12,8100	4.473.542.133,6900	1,47
XTMXL	TELMEX	75%	363.082.150	12,2500	4.447.756.337,5000	1,46
XBRPP	BRADESPAR,PR	100%	227.024.896	17,6200	4.000.178.667,5200	1,31
XENI	ENERSIS, ORD	40%	261.209.332	15,1400	3.954.709.286,4800	1,30
XEOC	ENDESA CHILE	40%	109.356.728	34,8500	3.811.081.970,8000	1,25
XELTB	ELETROBRAS B	100%	227.186.643	13,1400	2.985.232.489,0200	0,98
XEKT	ELEKTRA	30%	73.314.413	40,0700	2.937.708.528,9100	0,96
XGMD	GRUPO MODELO	100%	63.717.182	43,7500	2.787.626.712,5000	0,91
XUSIO	USIMINAS ORD	40%	101.052.137	24,2600	2.451.524.843,6200	0,80
XELTO	ELETROBRAS	20%	181.004.705	10,7500	1.945.800.578,7500	0,64
XCOP	COPEL	100%	128.624.295	15,0400	1.934.509.396,8000	0,63
XBRK	BRASKEM	100%	329.871.890	5,3300	1.758.217.173,7000	0,58
XALFA	ALFA	50%	28.000.000	58,9000	1.649.200.000,0000	0,54
XNET	NET SERVIÇOS	75%	171.377.937	9,0000	1.542.401.433,0000	0,51
XBCH	BANCO CHILE	20%	27.517.233	46,5300	1.280.376.851,4900	0,42
XGEO	CORP. GEO	100%	537.835.959	2,3500	1.263.914.503,6500	0,41
XVOLB	VOLCAN	100%	141.615.492	8,7207	1.234.989.155,4595	0,40
XBRPO	BRADESPAR,OR	30%	36.799.352	17,5500	645.828.627,6000	0,21
XTZA	TV AZTECA	50%	107.439.899	4,3700	469.512.358,6300	0,15
XBFR	BBVA FRANCES	30%	160.908.392	1,8400	296.071.441,2800	0,10
XCEL	IUSACELL	30%	37.583.672	3,0000	112.751.016,0000	0,04
XSARE	SARE HOLDING	75%	28.717.889	2,7000	77.538.300,3000	0,03
XSBP	SANT.BANCORP	15%	6.995.866	9,2300	64.571.843,1800	0,02
			17.692.079.832			100,00

**Cierre FTSE Latibex AS :** 3.774,6      **Capitalización :** 305.033.691.316,3095 €

# Informe de ajuste FTSE Latibex All Share

## *FTSE Latibex All Share adjustment report*

22/04/2010 18:11:39

<b>Indice antes de ajuste</b> <i>Index before adjustment</i>	<b>Indice después de ajuste</b> <i>Index after adjustment</i>	<b>Capitalización antes de ajuste</b> <i>Market Capitalisation before adjustment</i>	<b>Capitalización después de ajuste</b> <i>Market Capitalisation after adjustment</i>	<b>"J" de ajuste</b> <i>"J" (Mkt. K2 - K1)</i>	<b>Divisor del FTSE Latibex</b> <i>FTSE Latibex Divisor</i>
3.774,6	3.774,6	305.033.691.313,1700	305.033.691.316,3095	3,1395	80.812.758

<b>Símbolo</b>	<b>Títulos antes de ajuste</b> <i>Shares before adjustment</i>	<b>Títulos después de ajuste</b> <i>Shares after adjustment</i>	<b>Capitalización antes de ajuste</b> <i>Capitalisation before adjustment</i>	<b>Capitalización después de ajuste</b> <i>Capitalisation after adjustment</i>	<b>Diferencia de Capitalizaciones</b> <i>Capitalisation difference</i>
XVOLB	127.581.524	141.615.492	1.234.989.152,3200	1.234.989.155,4595	3,1395

Altas en FTSE Latibex All Share  
*FTSE Latibex All Share additions*

Bajas en FTSE Latibex All Share  
*FTSE Latibex All Share deletions*

## Resumen diario FTSE Latibex All Share de fecha: 22/04/2010

FTSE Latibex All Share			Hora			
			Time			
Anterior	Previous	3.823,4	Máximo	Max	3.827,2	11:33:27
Inicial	Open	3.814,2	Mínimo	Min	3.766,7	17:28:34
Cierre	Close	3.774,6	Variación	Change	-48,8	
Medio	Mid	3.797,2			-1,28%	

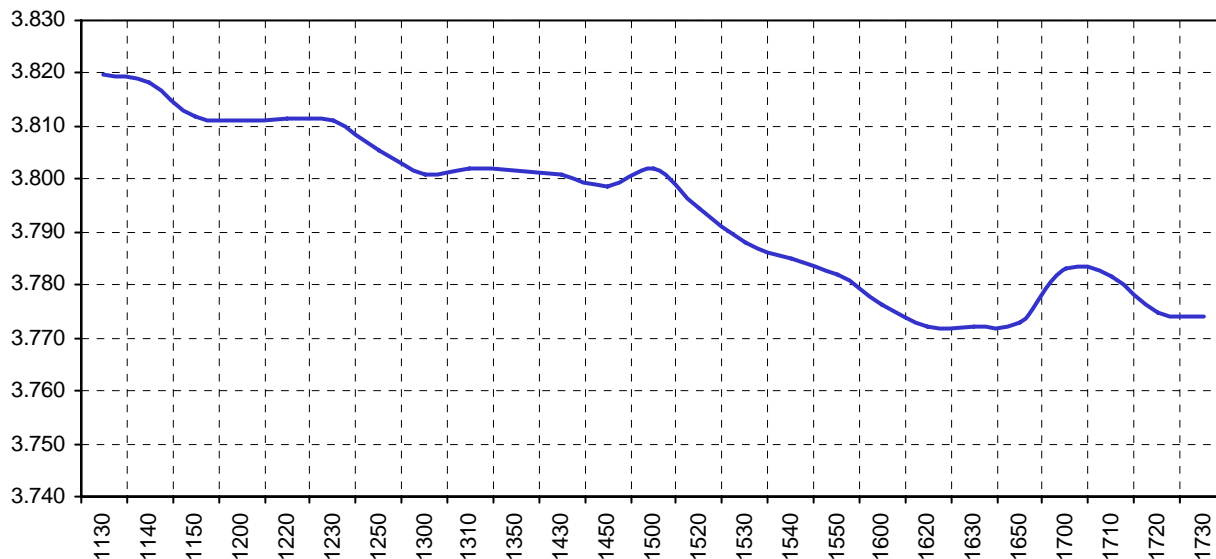
Totales Latibex					
Títulos	260.534	Efectivo €	1.963.063,41	Negociaciones	129

### Equivalencia unidades de contratación acciones:

Conversion of trading units into shares:

Código	Nº Acciones por Unidad de contratación	Código	Nº Acciones por Unidad de contratación	Código	Nº Acciones por Unidad de contratación
Symbol	# Shares per Trade unit	Symbol	# Shares per Trade unit	Symbol	# Shares per Trade unit
XALFA	10	XAMXL	20	XBBDC	1
XBCH	600	XBFR	1	XBRK	1
XBRPO	1	XBRPP	1	XCEL	1
XCMIG	1	XCOP	1	XEKT	1
XELTB	1	XELTO	1	XENI	50
XEOC	30	XGEO	1	XGGB	1
XGMD	10	XNET	1	XNOR	10
XPBR	1	XPBRA	1	XSARE	10
XSBP	1	XTII	20	XTMXL	20
XTZA	10	XUSI	1	XUSIO	1
XVALO	1	XVALP	1	XVOLB	10

Valor medio del FTSE Latibex All Share cada 10'





**22/04/2010**

**Hechos Relevantes Públicos que afectan al índice FTSE Latibex All Share**

**Hechos Relevantes que afectan al cálculo del índice FTSE Latibex All Share**

23/04/2010 VOLCAN COMPAÑÍA MINERA

AJUSTE POR AMPLIACIÓN DE CAPITAL LIBERADA (0,11 x 1)

**Pago de Dividendos de los valores componentes del índice FTSE Latibex All Share**

04/05/2010 BRADESCO

EX-DATE DIVIDENDO: R\$ 0,0145 (FECHA REGISTRO: 3/05/2010)