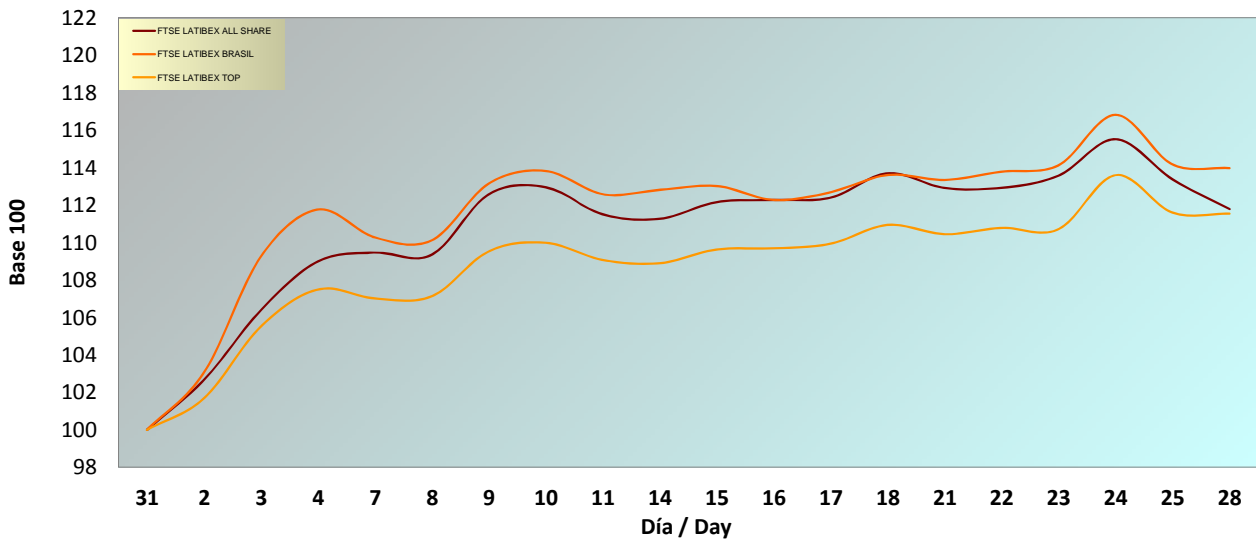
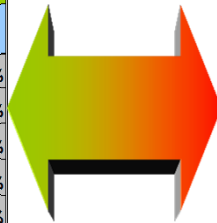


INFORME MENSUAL ENERO 2019 / MONTHLY REPORT JANUARY 2019
Evolución Mensual / Monthly performance

ÍNDICE / INDEX	CIERRE / CLOSING PRICE	DIFERENCIA EN PUNTOS / POINTS DIFFERENCE	RENTABILIDAD / YIELD	RENTABILIDAD EN EL AÑO / YTD YIELD	RENTABILIDAD INTERANUAL / YOY YIELD
FTSE LATIBEX ALL SHARE	2.509,7	331,3	15,21%	15,21%	14,35%
FTSE LATIBEX BRASIL	12.259,9	1.968,1	19,12%	19,12%	26,62%
FTSE LATIBEX TOP	5.352,7	675,7	14,45%	14,45%	19,60%

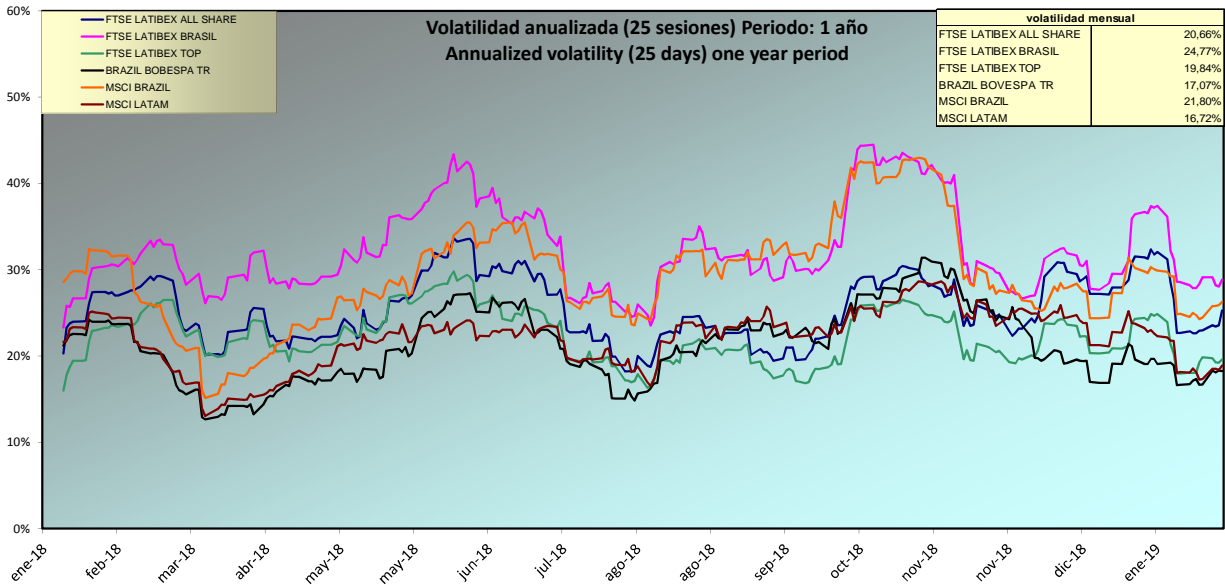
Evolución mensual índices FTSE LATIBEX / Monthly performance

RANKING DE VALORES / TOP & BOTTOM PERFORMING

SUBIDAS / TOP		
CODIGO / CODE	VALOR / STOCK	RENTABILIDAD YIELD
XELTO	ELETROBRAS	55,26%
XELTB	ELETROBRAS B	50,39%
XVOLB	VOLCAN	28,57%
XPBR	PETROBRAS OR	28,18%
XBBDC	B.BRADESCO	27,49%

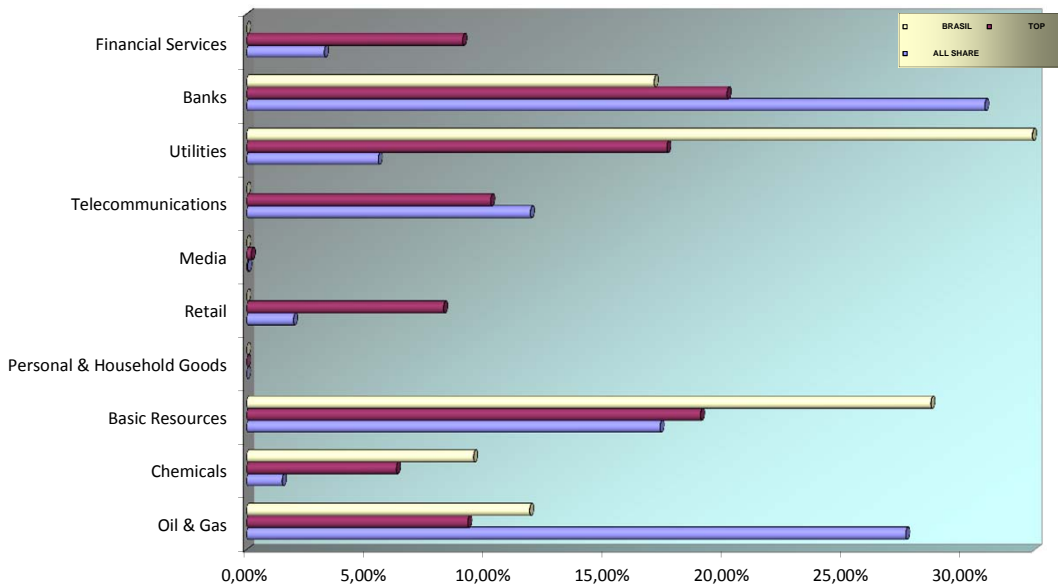


BAJADAS / BOTTOM		
CODIGO / CODE	VALOR / STOCK	RENTABILIDAD YIELD
XTZA	TV AZTECA	-7,08%
XNOR	GF BANORTE	-4,52%
XVALO	VALE RIO ORD	-4,42%
XBRPO	BRADESPAR,OR	-3,97%
XBRPP	BRADESPAR,PR	-3,62%

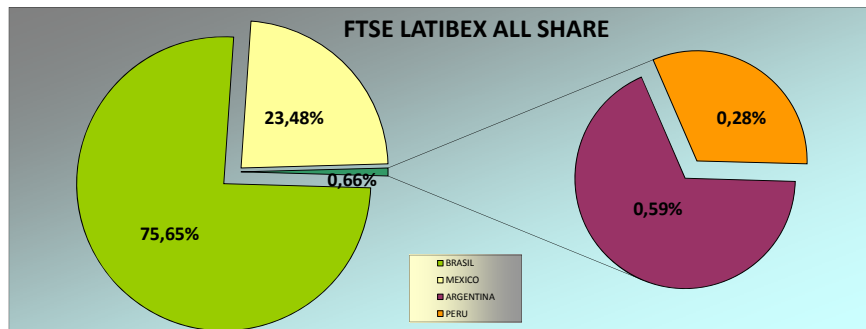
ANÁLISIS DE VOLATILIDAD / VOLATILITY ANALYSIS



ANÁLISIS SECTORIAL / SUPERSECTOR BREAKDOWN



ANÁLISIS GEOGRÁFICO / COUNTRY BREAKDOWN



Fuente: Bloomberg y Sociedad de Bolsas, S.A.