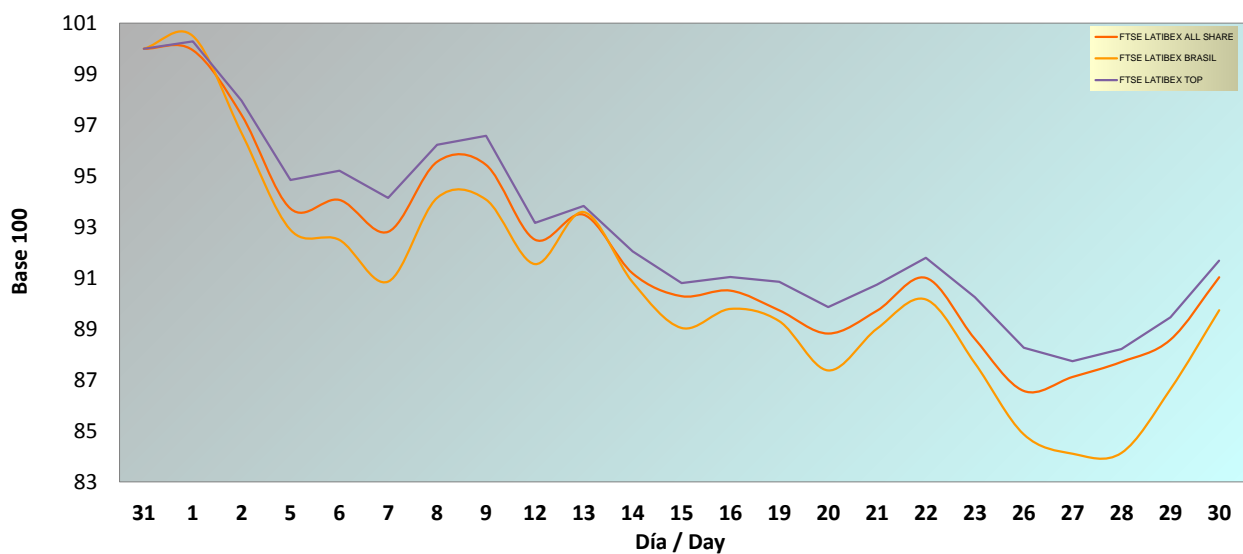



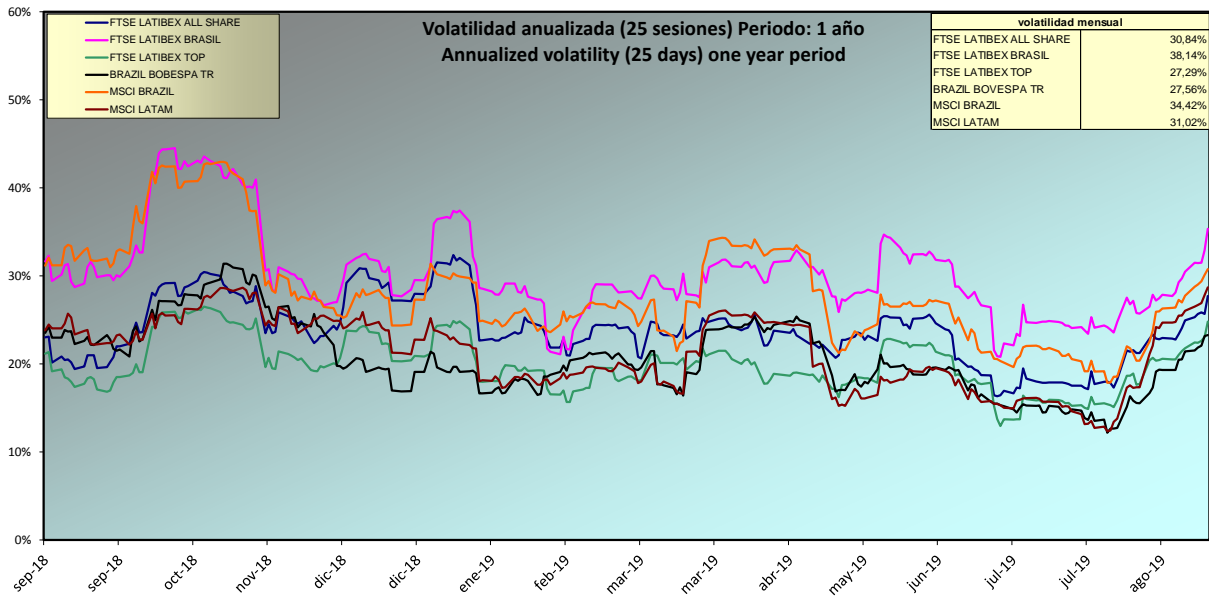
INFORME MENSUAL AGOSTO 2019 / MONTHLY REPORT AUGUST 2019
Evolución Mensual / Monthly performance

ÍNDICE / INDEX	CIERRE / CLOSING PRICE	DIFERENCIA EN PUNTOS / POINTS DIFFERENCE	RENTABILIDAD / YIELD	RENTABILIDAD EN EL AÑO / YTD YIELD	RENTABILIDAD INTERANUAL / YOY YIELD
FTSE LATIBEX ALL SHARE	2.247,2	-221,3	-8,97%	3,16%	5,29%
FTSE LATIBEX BRASIL	10.758,7	-1.230,1	-10,26%	4,54%	17,86%
FTSE LATIBEX TOP	4.860,2	-440,9	-8,32%	3,92%	9,10%

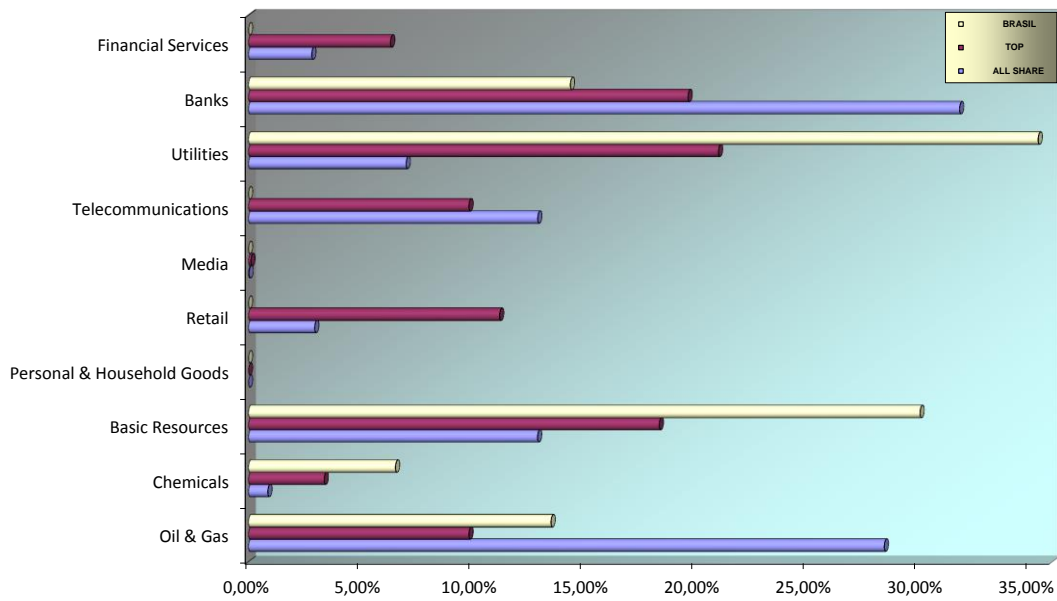
Evolución mensual índices FTSE LATIBEX / Monthly performance

RANKING DE VALORES / TOP & BOTTOM PERFORMING

SUBIDAS / TOP				BAJADAS / BOTTOM		
CODIGO / CODE	VALOR / STOCK	RENTABILIDAD YIELD		CODIGO / CODE	VALOR / STOCK	RENTABILIDAD YIELD
XELTO	ELETROBRAS	10,99%		XTZA	TV AZTECA	-32,00%
XELTB	ELETROBRAS B	10,27%		XALFA	ALFA	-25,13%
XEKT	ELEKTRA	0,82%		XBRK	BRASKEM	-23,46%
				XUSI	USIMINAS	-19,71%
				XGGB	GERDAU PREF	-16,87%

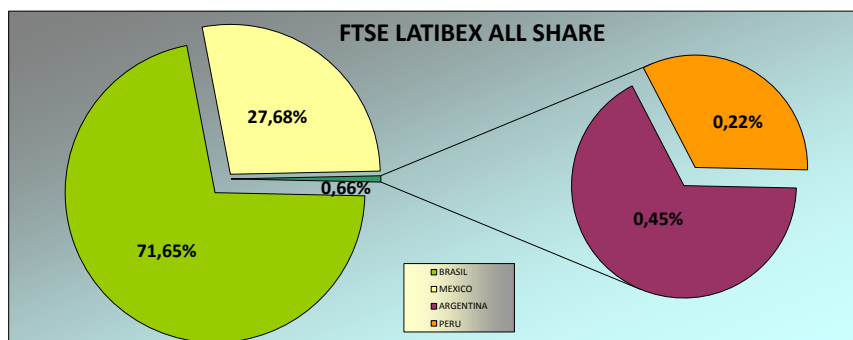
ANÁLISIS DE VOLATILIDAD / VOLATILITY ANALYSIS



ANÁLISIS SECTORIAL / SUPERSECTOR BREAKDOWN



ANÁLISIS GEOGRÁFICO / COUNTRY BREAKDOWN



Fuente: Bloomberg y Sociedad de Bolsas, S.A.