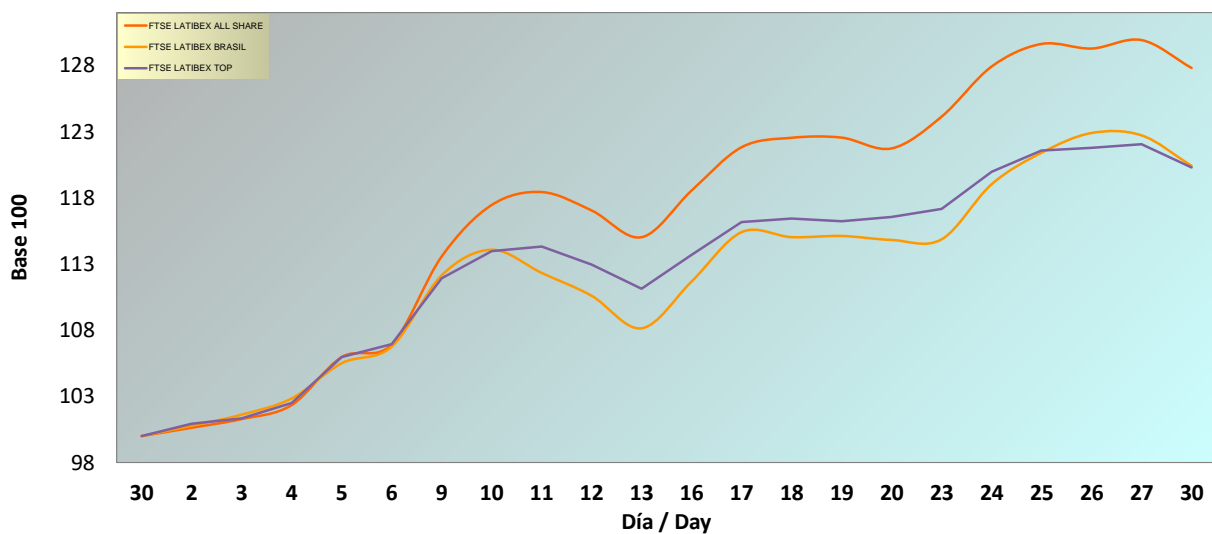
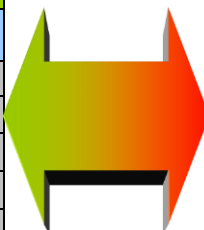


**INFORME MENSUAL NOVIEMBRE 2020 / MONTHLY REPORT NOVEMBER 2020**
**Evolución Mensual / Monthly performance**

ÍNDICE / INDEX	CIERRE / CLOSING PRICE	DIFERENCIA EN PUNTOS / POINTS DIFFERENCE	RENTABILIDAD / YIELD	RENTABILIDAD EN EL AÑO / YTD YIELD	RENTABILIDAD INTERANUAL / YOY YIELD
FTSE LATIBEX ALL SHARE	1.838,7	400,1	27,81%	-27,40%	-26,86%
FTSE LATIBEX BRASIL	8.922,9	1.513,0	20,42%	-27,42%	-22,00%
FTSE LATIBEX TOP	4.130,2	696,5	20,28%	-23,40%	-20,08%

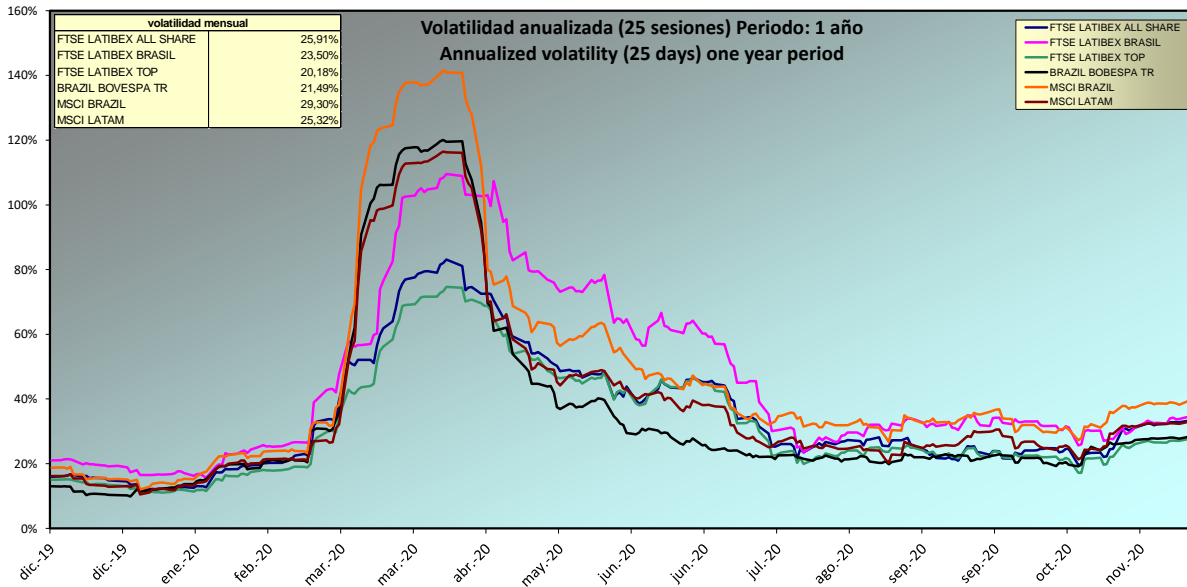
**Evolución mensual índices FTSE LATIBEX / Monthly performance**

**RANKING DE VALORES / TOP & BOTTOM PERFORMING**

SUBIDAS / TOP		
CODIGO / CODE	VALOR / STOCK	RENTABILIDAD YIELD
XNOR	GF BANORTE	41,82%
XPBR	PETROBRAS OR	38,89%
XPBRA	PETROBRAS PR	37,06%
XVALO	VALE RIO ORD	30,95%
XBRPP	BRADESPAR,PR	30,22%

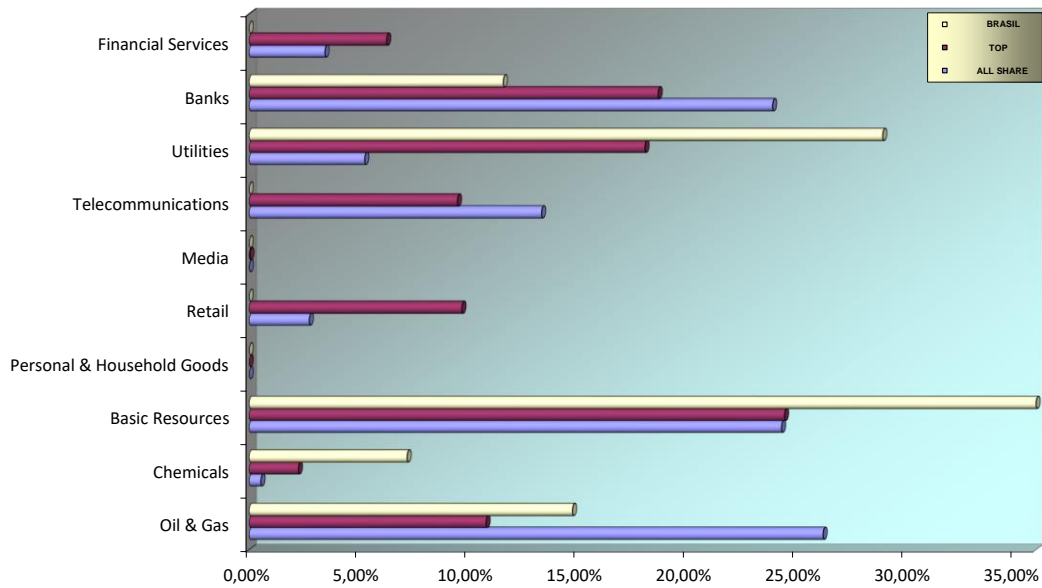


BAJADAS / BOTTOM		
CODIGO / CODE	VALOR / STOCK	RENTABILIDAD YIELD
XVOLB	VOLCAN	-16,17%
XBBAR	BBVA ARGENTI	-3,98%

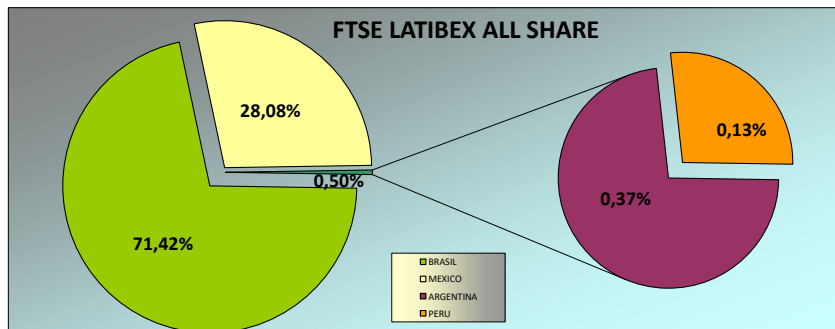
**ANÁLISIS DE VOLATILIDAD / VOLATILITY ANALYSIS**



**ANÁLISIS SECTORIAL / SUPERSECTOR BREAKDOWN**



**ANÁLISIS GEOGRÁFICO / COUNTRY BREAKDOWN**



Fuente: Bloomberg y Sociedad de Bolsas, S.A.