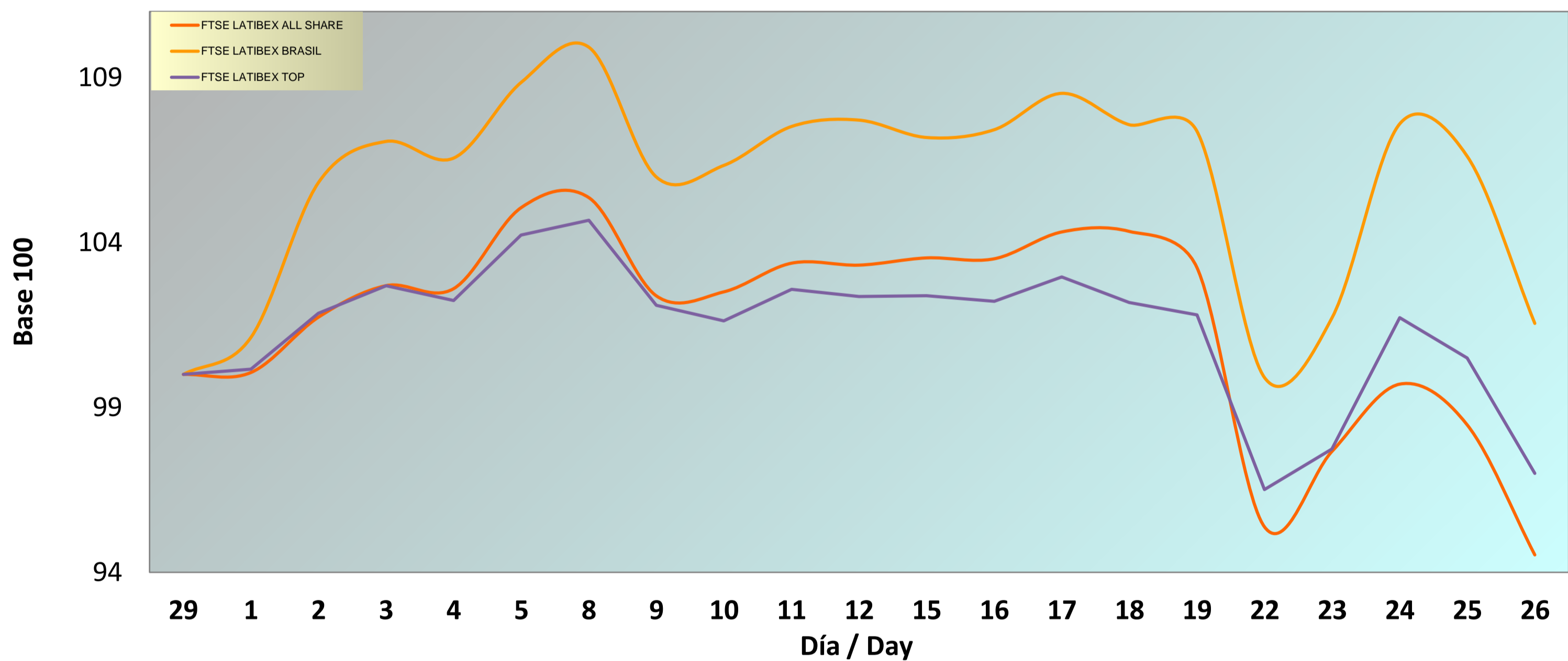
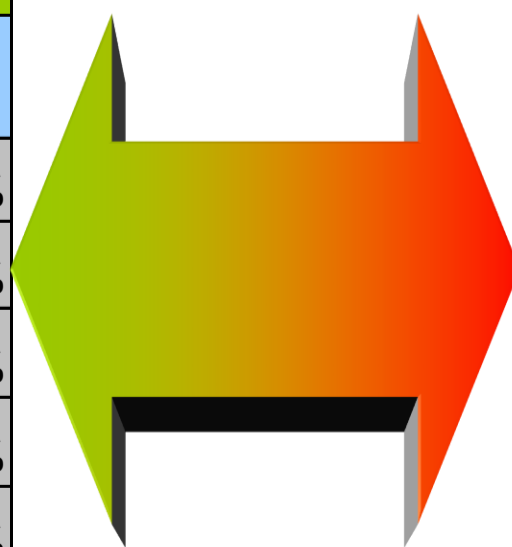


INFORME MENSUAL FEBRERO 2021 / MONTHLY REPORT FEBRUARY 2021
Evolución Mensual / Monthly performance

ÍNDICE / INDEX	CIERRE / CLOSING PRICE	DIFERENCIA EN PUNTOS / POINTS DIFFERENCE	RENTABILIDAD / YIELD	RENTABILIDAD EN EL AÑO / YTD YIELD	RENTABILIDAD INTERANUAL / YOY YIELD
FTSE LATIBEX ALL SHARE	1.792,9	-103,8	-5,47%	-9,20%	-25,93%
FTSE LATIBEX BRASIL	9.135,3	139,1	1,55%	-6,72%	-23,82%
FTSE LATIBEX TOP	4.039,4	-125,1	-3,00%	-7,45%	-24,59%

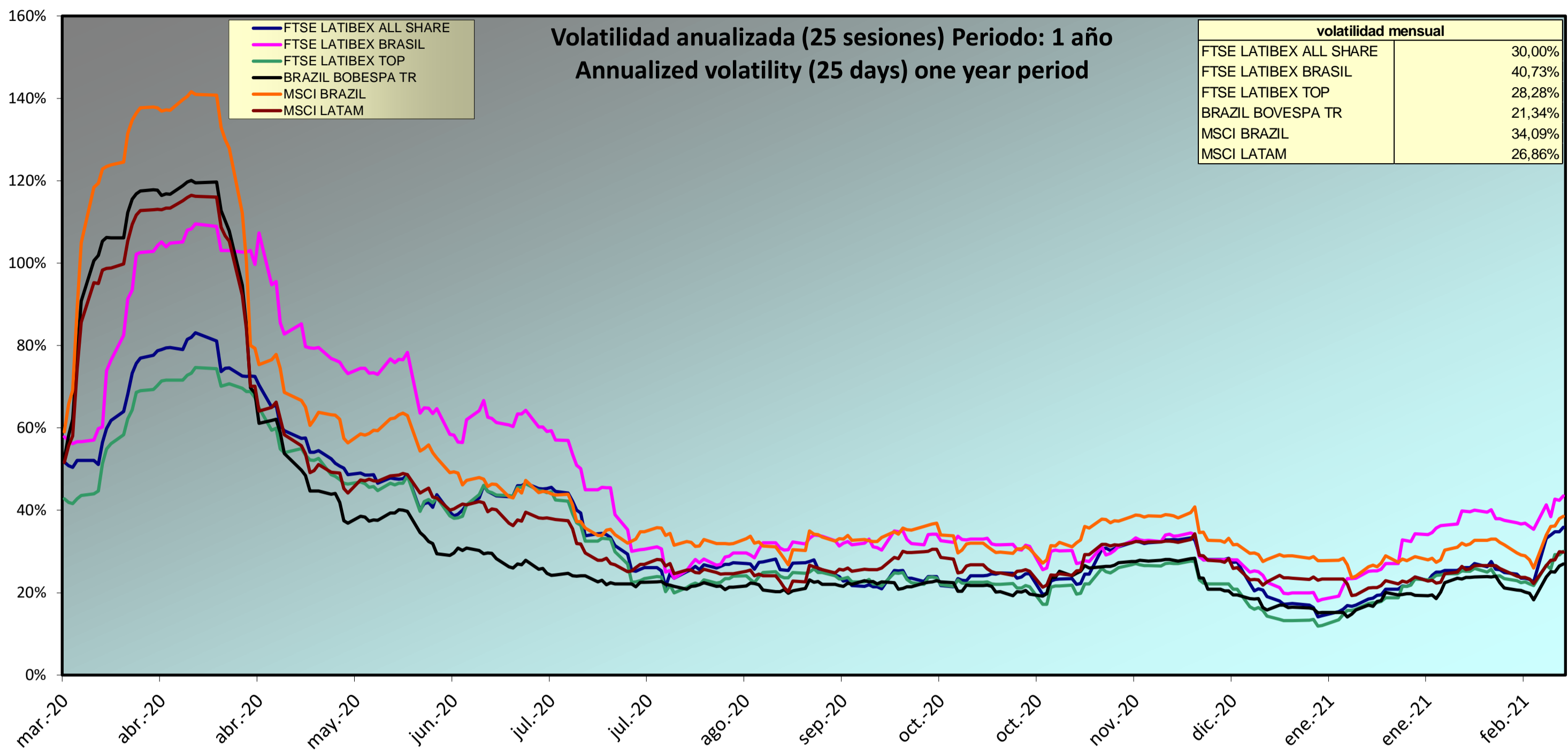
Evolución mensual índices FTSE LATIBEX / Monthly performance

RANKING DE VALORES / TOP & BOTTOM PERFORMING

SUBIDAS / TOP		
CODIGO / CODE	VALOR / STOCK	RENTABILIDAD YIELD
XVOLB	VOLCAN	60,00%
XBRK	BRASKEM	32,39%
XUSI	USIMINAS	18,81%
XTZA	TV AZTECA	14,71%
XELTB	ELETRORAS B	14,25%

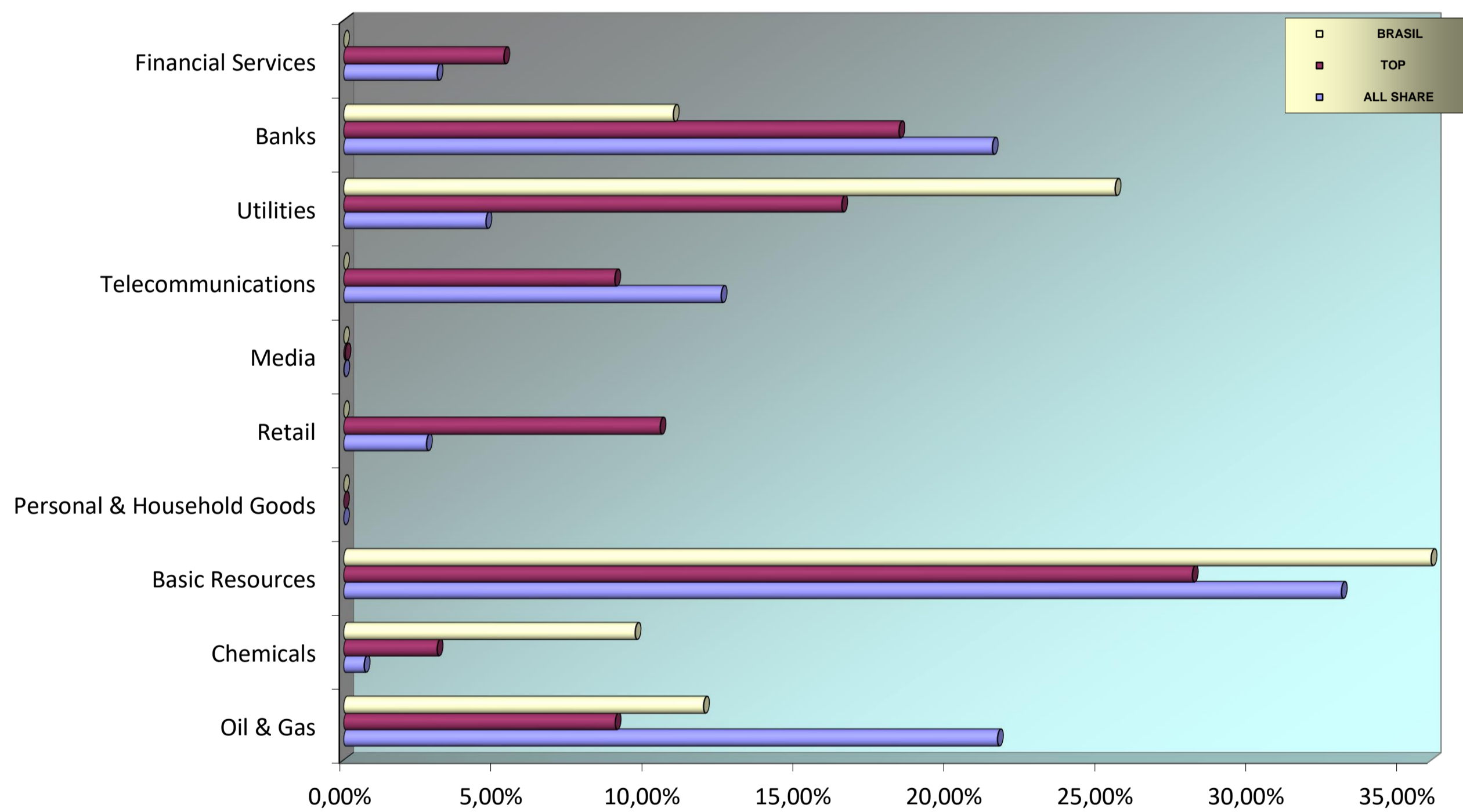


BAJADAS / BOTTOM		
CODIGO / CODE	VALOR / STOCK	RENTABILIDAD YIELD
XPBR	PETROBRAS OR	-19,23%
XPBRA	PETROBRAS PR	-17,24%
XCMIG	CEMIG	-13,81%
XNOR	GF BANORTE	-10,89%
XALFA	ALFA	-9,65%

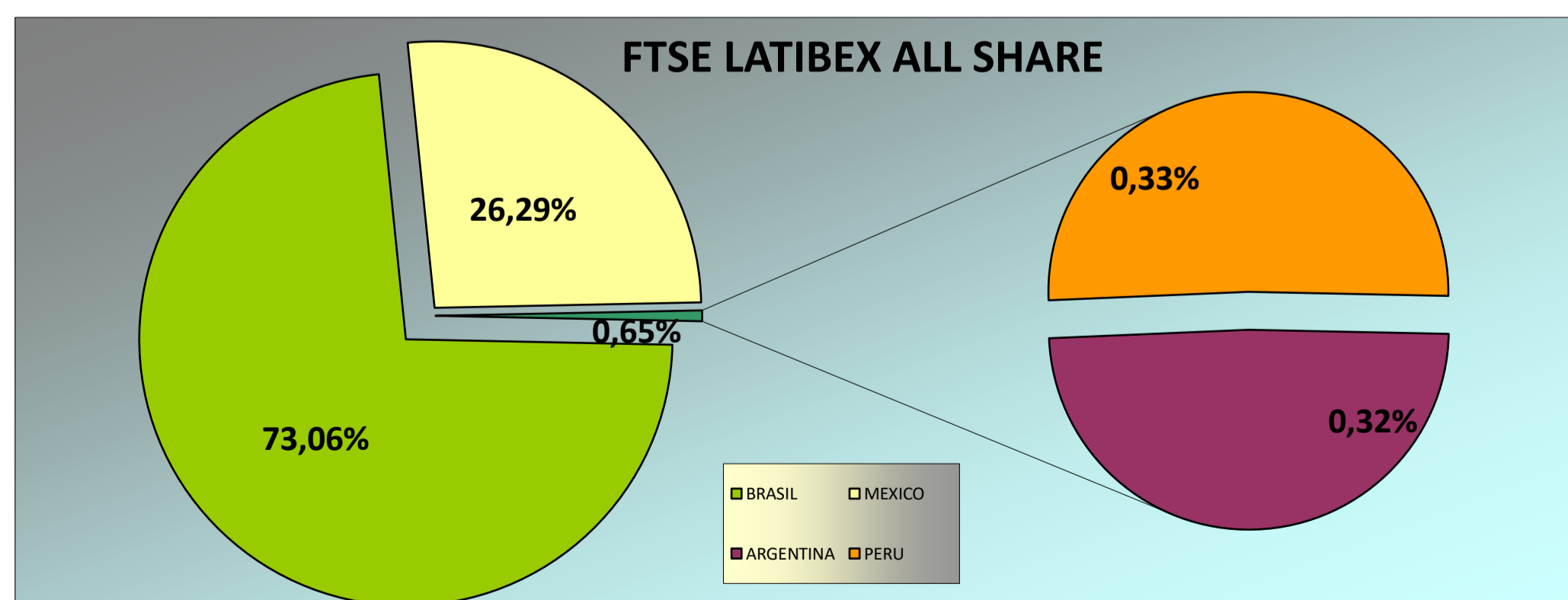
ANÁLISIS DE VOLATILIDAD / VOLATILITY ANALYSIS



ANÁLISIS SECTORIAL / SUPERSECTOR BREAKDOWN



ANÁLISIS GEOGRÁFICO / COUNTRY BREAKDOWN



Fuente: Bloomberg y Sociedad de Bolsas, S.A.