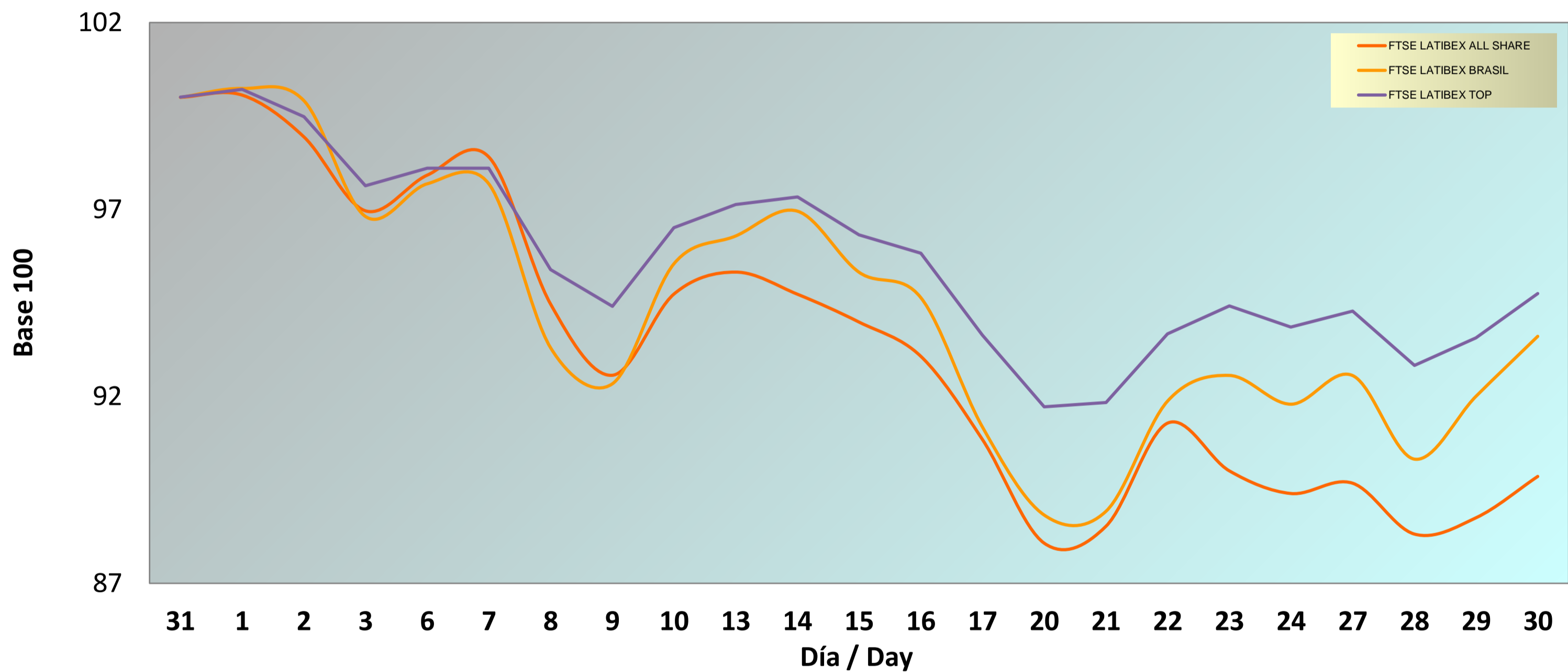


**INFORME MENSUAL SEPTIEMBRE 2021 / MONTHLY REPORT SEPTEMBER 2021**

**Evolución Mensual / Monthly performance**

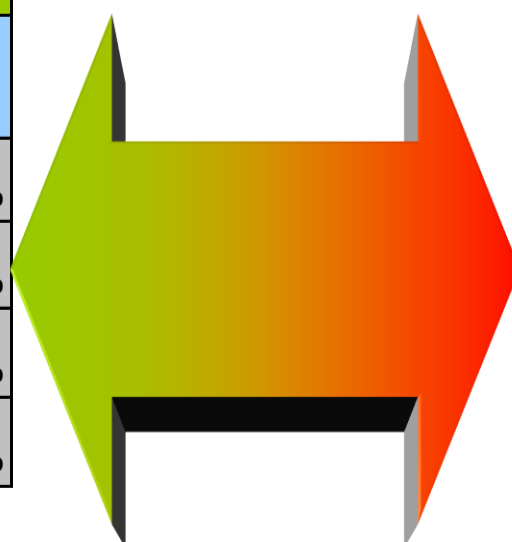
ÍNDICE / INDEX	CIERRE / CLOSING PRICE	DIFERENCIA EN PUNTOS / POINTS DIFFERENCE	RENTABILIDAD / YIELD	RENTABILIDAD EN EL AÑO / YTD YIELD	RENTABILIDAD INTERANUAL / YOY YIELD
FTSE LATIBEX ALL SHARE	2.028,4	-228,9	-10,14%	2,73%	30,06%
FTSE LATIBEX BRASIL	11.351,9	-775,3	-6,39%	15,91%	44,28%
FTSE LATIBEX TOP	4.999,4	-277,0	-5,25%	14,55%	39,80%

**Evolución mensual índices FTSE LATIBEX / Monthly performance**



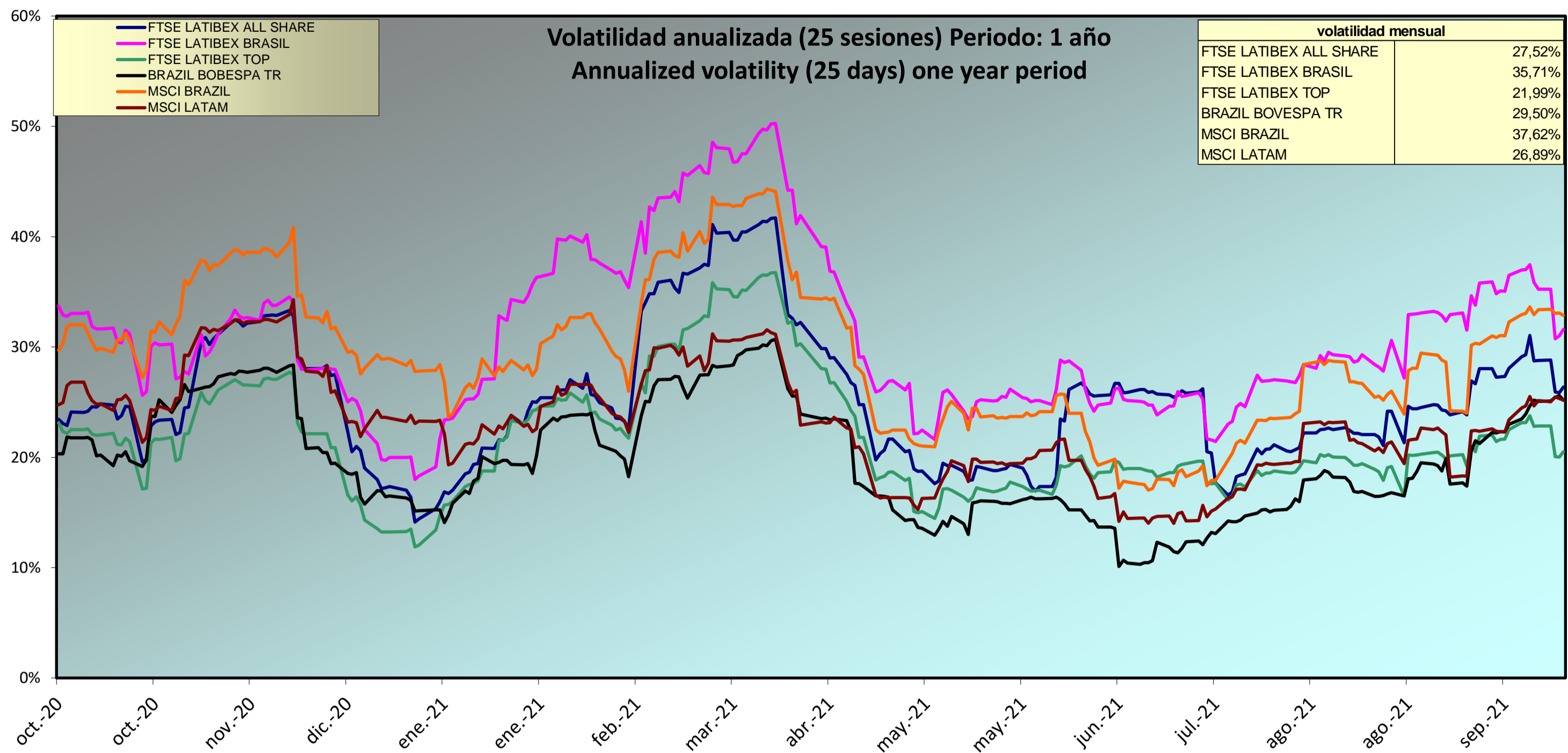
**RANKING DE VALORES / TOP & BOTTOM PERFORMING**

SUBIDAS / TOP		
CODIGO / CODE	VALOR / STOCK	RENTABILIDAD YIELD
X COP	COPEL	7,21%
X COPU	COPEL U	6,54%
X TZA	TV AZTECA	2,94%
X CMIG	CEMIG	2,73%

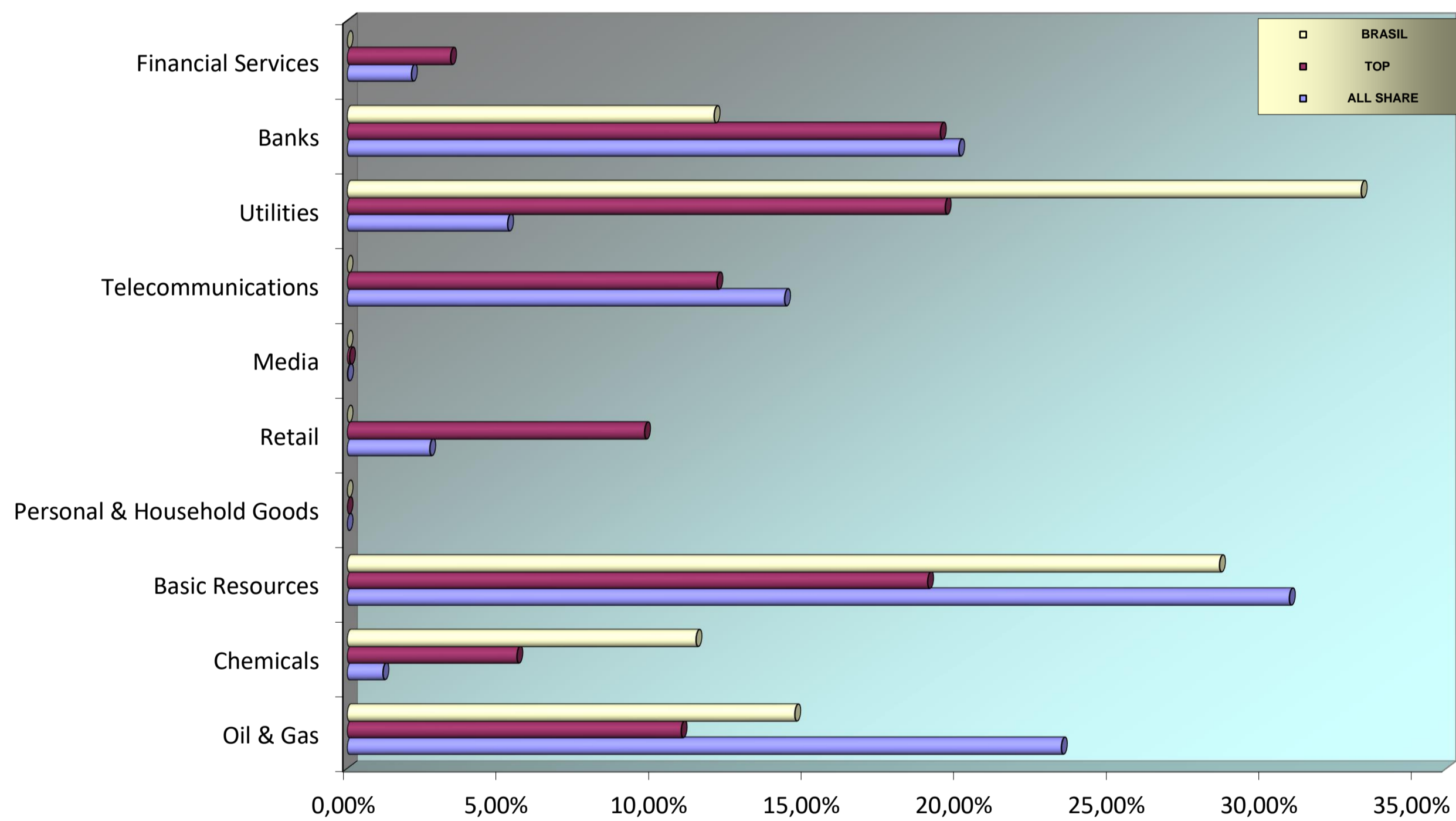


BAJADAS / BOTTOM		
CODIGO / CODE	VALOR / STOCK	RENTABILIDAD YIELD
X VALO	VALE RIO ORD	-21,94%
X BRPP	BRADSPAR,PR	-20,39%
X BRPO	BRADSPAR,OR	-17,65%
X USIO	USIMINAS ORD	-14,19%
X USI	USIMINAS	-13,25%

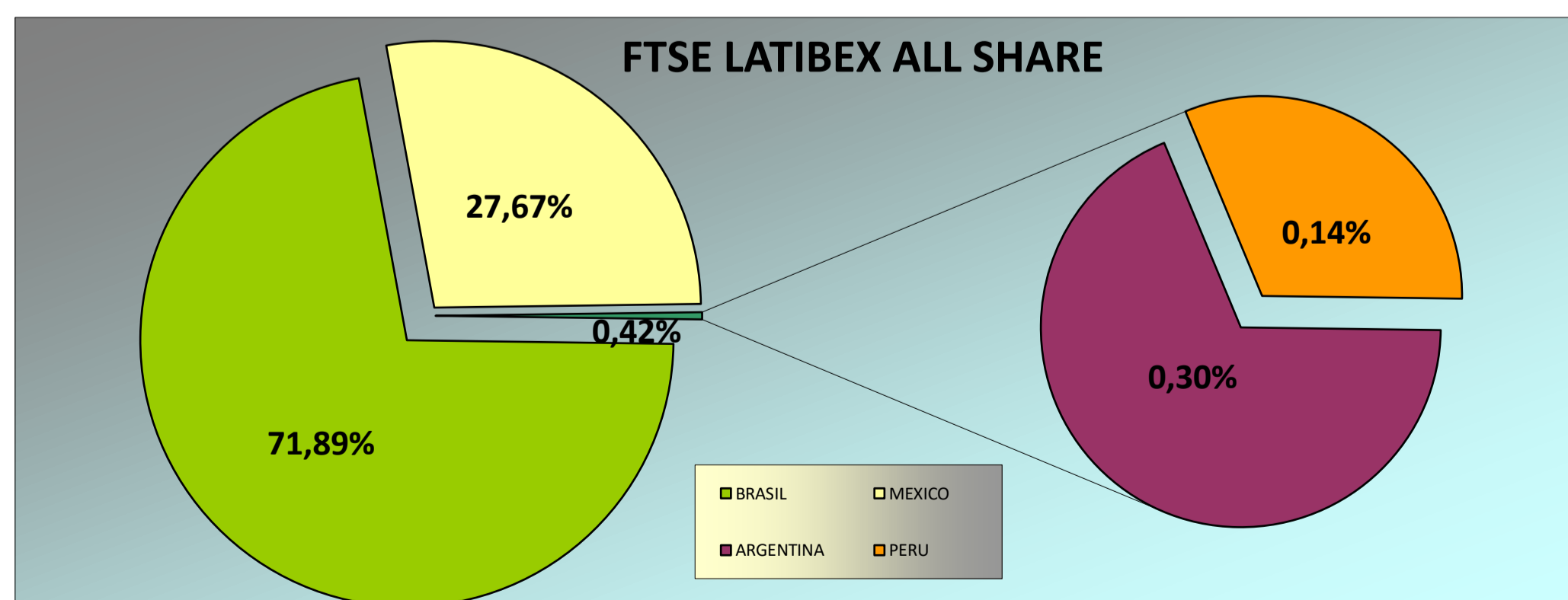
### ANÁLISIS DE VOLATILIDAD / VOLATILITY ANALYSIS



### ANÁLISIS SECTORIAL / SUPERSECTOR BREAKDOWN



### ANÁLISIS GEOGRÁFICO / COUNTRY BREAKDOWN



Fuente: Bloomberg y Sociedad de Bolsas, S.A.