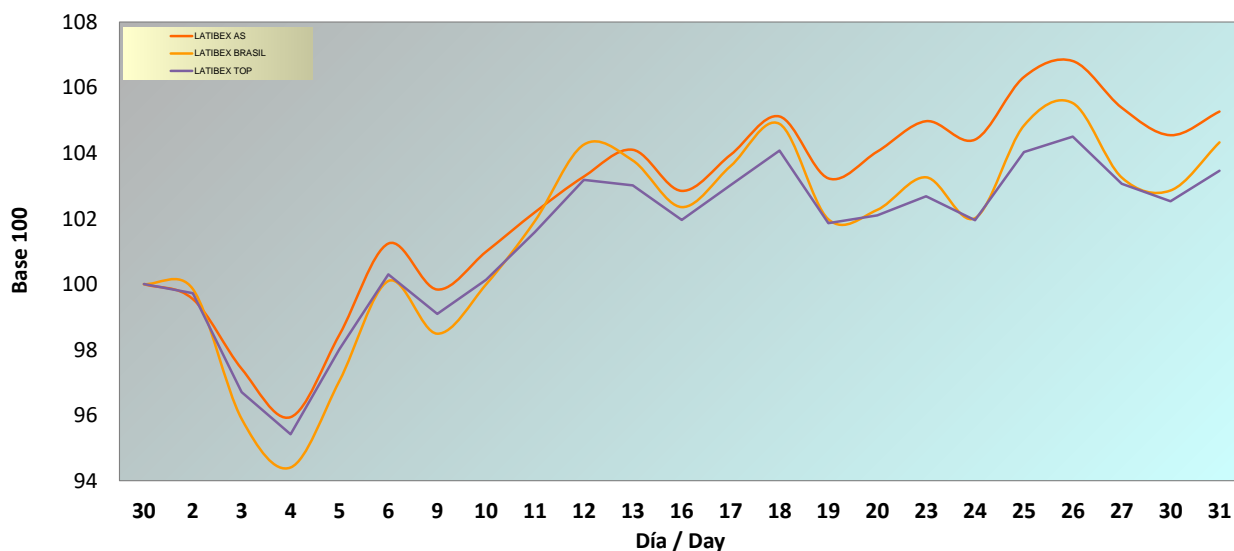
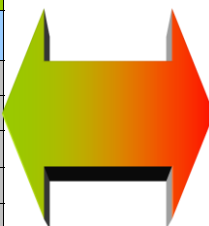


INFORME MENSUAL ENERO 2023 / MONTHLY REPORT JANUARY 2023
Evolución Mensual / Monthly performance

| ÍNDICE / INDEX | CIERRE / CLOSING PRICE | DIFERENCIA EN PUNTOS / POINTS DIFFERENCE | RENTABILIDAD / YIELD | RENTABILIDAD EN EL AÑO / YTD YIELD | RENTABILIDAD INTERANUAL / YOY YIELD |
|----------------|------------------------|--|----------------------|------------------------------------|-------------------------------------|
| LATIBEX AS | 2.432,3 | 121,7 | 5,27% | 5,75% | 15,00% |
| LATIBEX BRASIL | 11.681,3 | 484,4 | 4,33% | 4,48% | 10,73% |
| LATIBEX TOP | 5.525,7 | 184,9 | 3,46% | 3,75% | 11,05% |

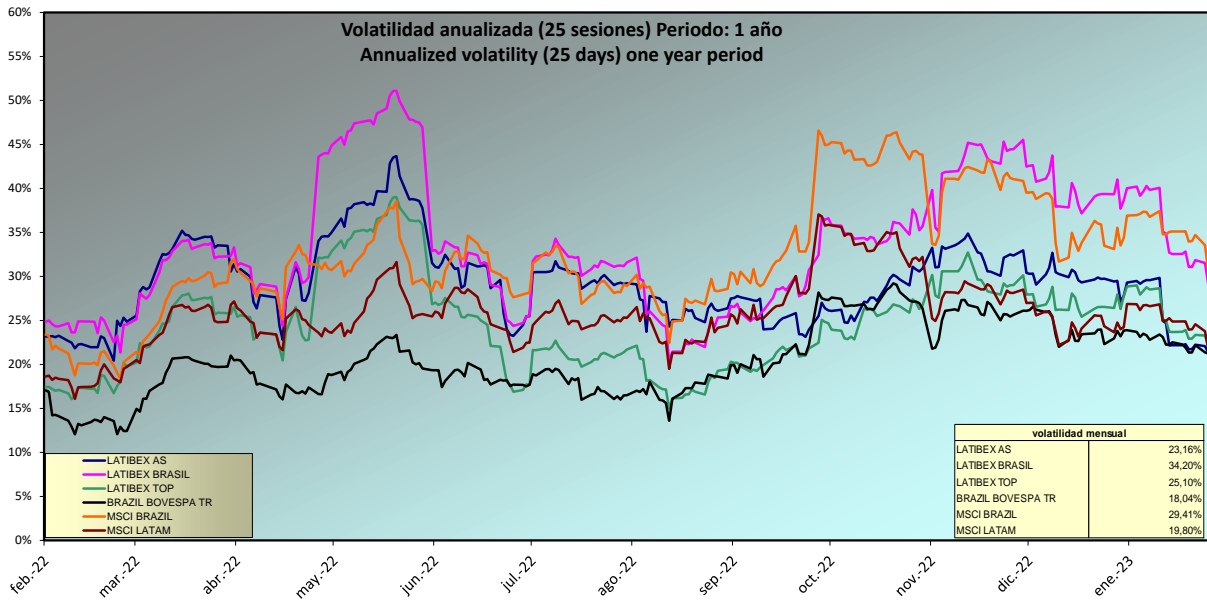
Evolución mensual índices LATIBEX / Monthly performance

RANKING DE VALORES / TOP & BOTTOM PERFORMING

| SUBIDAS / TOP | | |
|---------------|---------------|--------------------|
| CODIGO / CODE | VALOR / STOCK | RENTABILIDAD YIELD |
| XUSI | USIMINAS | 21,71% |
| XBBAR | BBVA ARGENTI | 21,30% |
| XUSIO | USIMINAS ORD | 18,38% |
| XGGB | GERDAU PREF | 16,19% |
| XAMXL | AMERICAMOVIL | 13,29% |

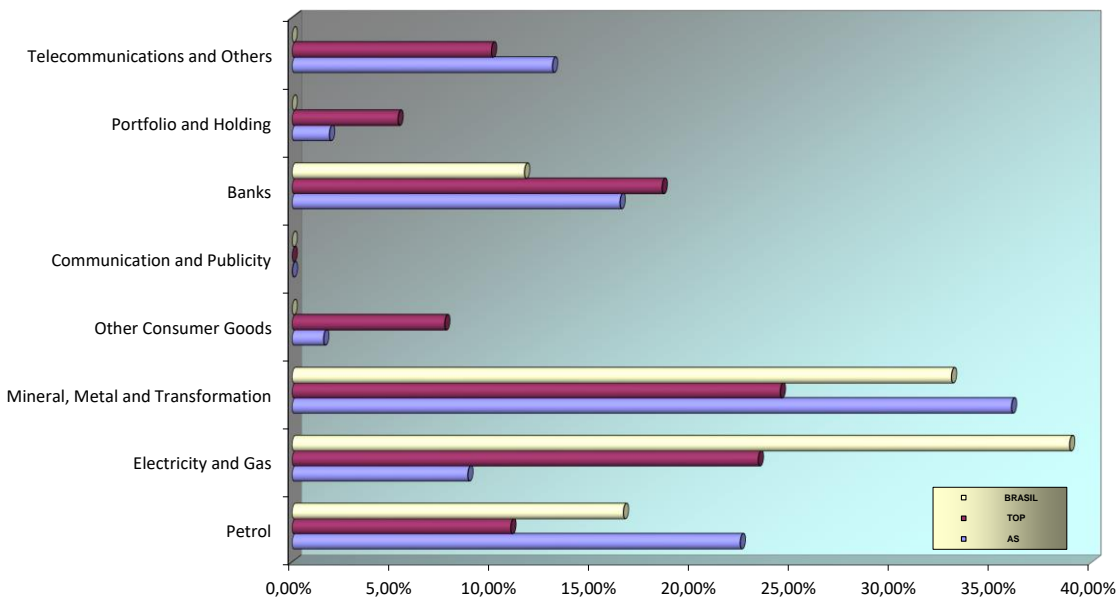


| BAJADAS / BOTTOM | | |
|------------------|---------------|--------------------|
| CODIGO / CODE | VALOR / STOCK | RENTABILIDAD YIELD |
| XALFA | ALFA | -6,57% |
| XBBDC | B.BRADESCO | -4,41% |
| XEKT | ELEKTRA | -3,77% |
| XELTO | ELETROBRAS | -2,65% |
| XBRK | BRASKEM | -0,93% |

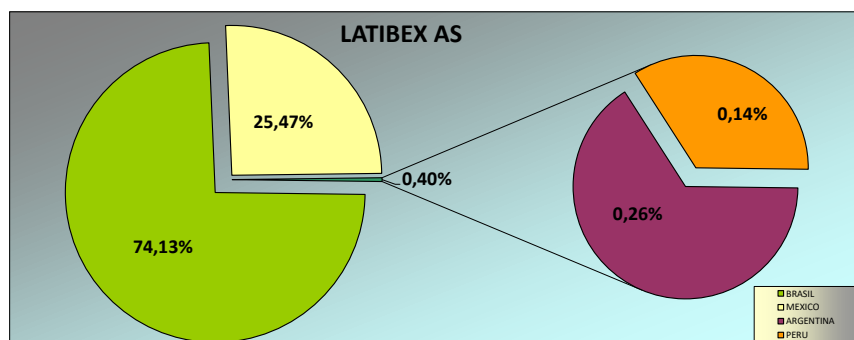
ANÁLISIS DE VOLATILIDAD / VOLATILITY ANALYSIS



ANÁLISIS SECTORIAL / SUPERSECTOR BREAKDOWN



ANÁLISIS GEOGRÁFICO / COUNTRY BREAKDOWN



Fuente: Bloomberg y Sociedad de Bolsas, S.A.